

The Sorema logo features the word "Sorema" in a stylized, rounded, orange font. The letters are interconnected, with the 'S' and 'O' being particularly prominent. The logo is set against a background of industrial machinery, including a large red hopper and various conveyor systems.

Sorema

PLASTIC RECYCLING SYSTEM

WWW.SOREMA.IT



PREVIERO
SIZE REDUCTION TECHNOLOGIES

WWW.PREVIERO.IT

FROM

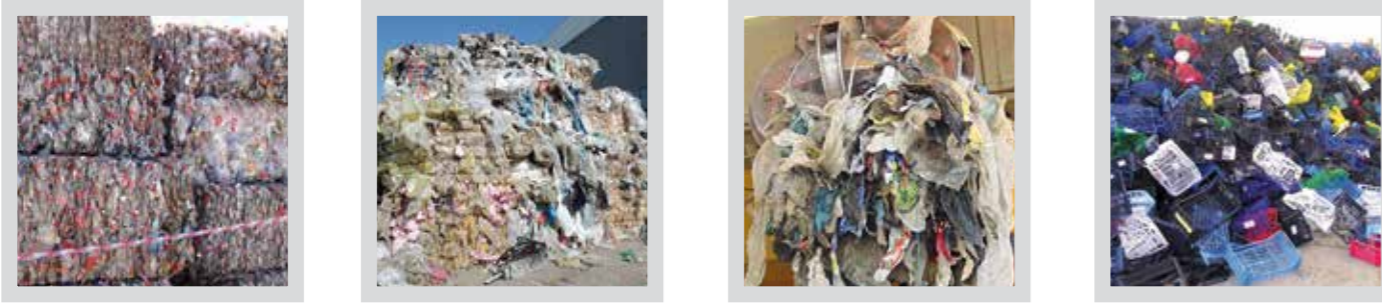


TO

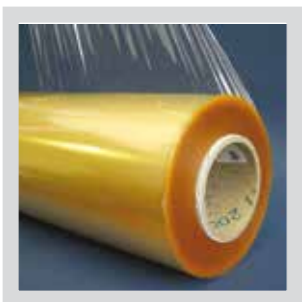
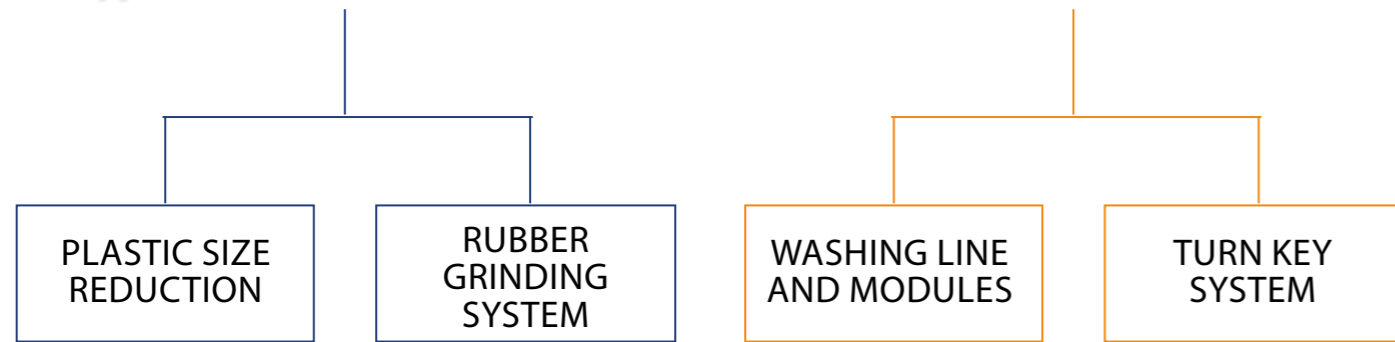
Wide range of solutions:
from individual modules
to turnkey projects...



Wide range of solutions: from individual modules to turnkey projects...



AREA OF ACTIVITY



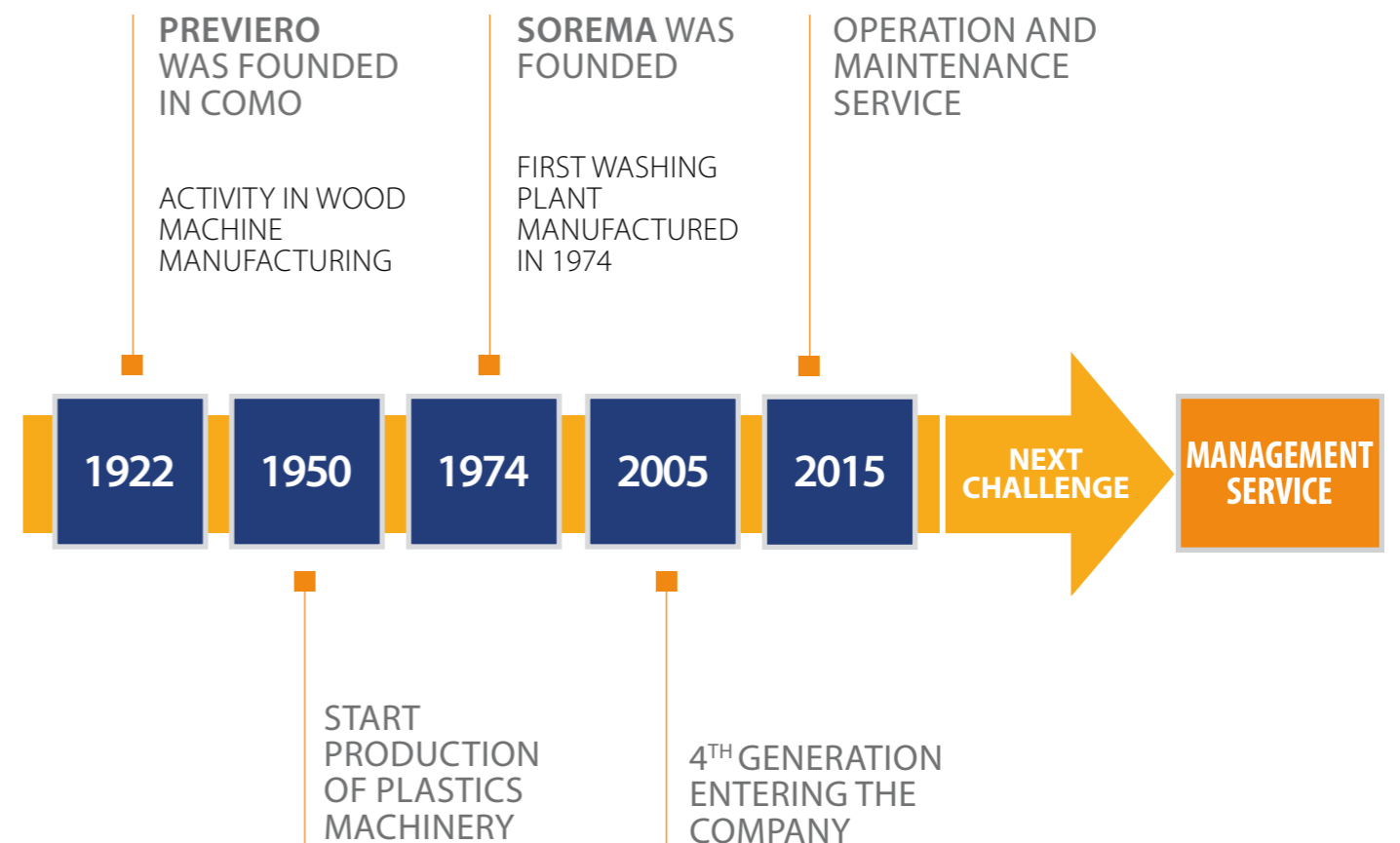
SOREMA,

A DIVISION OF **PREVIERO**, HAS INSTALLED HUNDREDS OF RECYCLING SYSTEMS SINCE 1976 PROCESSING EVERY TYPE OF WASTE PLASTIC IMAGINABLE.

THE TECHNICAL AND MANUFACTURING DEPARTMENTS USE THE LATEST 3D SOFTWARE TO INTEGRATE THE BEST TECHNOLOGY AVAILABLE INTO TURNKEY RECYCLING SYSTEMS PRODUCING THE HIGHEST QUALITY RECYCLED MATERIAL.

SOREMA HAS BEEN AWARDED NUMEROUS WORLDWIDE PATENTS FOR RECYCLING MACHINES AND PROCESSES.

A 4TH GENERATION FAMILY COMPANY





Research - Analysis of process conditions

COMPLETE ANALYSIS OF INPUT MATERIAL AND TEST ON OUR PILOT LINE

- Complete mass balance
- Polymer composition
- Contamination description
- Output quality validation
- Effluent water analysis (washing test)



Manufacturing and pre-assembling

- Plants are pre-assembled in our premises before the shipment
- All the interfaces and connections between the machineries are verified
- Care of the constructive details to grant the highest quality standard
- Option to arrange a pre-commissioning of the plant in our site



Engineering and Technical Assistance

- Plant design made by our engineering department
- After sales assistance and Problem solving
- Plant and machineries design with 3D modeling software
- Up-grade of existing lines with integration of new modules



Installation and start-up

- Packing and shipping for installation at customer site
- Our supply includes not only supervision of installation, but also mechanical assembling and electrical cabling services
- Quick start-up and achievement of design capacity
- High cooperation, qualified technical personnel providing personnel training

Wide range of solutions: from individual modules to turnkey projects...



After sales service and production support

- Preventive maintenance program on site
- Remote technical assistance
- Standard operating procedure support
- Spare parts management



COMPLETE SYSTEMS

PET /HDPE BOTTLES LINES AND THERMOFORMS

Complete systems or modules from 500 kg/h to 7000 kg/h.
Solutions for every applications as fibers, strapping, sheet and food contact packaging

Wide range of solutions:
from individual modules
to turnkey projects...





COMPLETE SYSTEMS

Wide range of solutions:
from individual modules
to turnkey projects...

FILM LINES

Lines and modules for every type of film waste.
Complete range of system for PE, PP, PS, PET film, from post-consumer, post-industrials or agricultural origins.





RIGID PACKAGING

A wide range of solutions covering every potential applications.
The lines can integrate hot washing modules, where high quality output is requested.

FEEDING AND SORTING SYSTEMS



NEW DEVELOPMENT BOTTLES PRE-WASHING SYSTEM

- A pre-cleaning system capable to remove labels including sleeves and granting very clean bottle's surfaces with high contaminated material.
- The pre-cleaning system can be utilize dry or wet with cold or hot washing solution.
- The pre-cleaning system when use in wet configuration do not allows the water solution to enter the bottles, as consequence the following part of the system remain dry without dripping.
- The pre-cleaning is also design to prepare the residual materials like cups, labels, and fractions of bottles, for the following MULTI PROCESS LINE





WHOLE BOTTLES PREWASHING:
ELIMINATE SURFACE CONTAMINATION AND PAPER. RELEASE AND SEPARATE PLASTIC LABELS.



SHREDDING:
FEED AT CONSTANT RATE THE WASH LINE. CONTROL SIZE AND IMPROVE PERFORMANCE IN COMBINATION WITH PREWASH.



FILM PREWASH:
DIFFERENT SOLUTIONS ACCORDING TO CONTAMINATION. BY REDUCING MAJORITY OF CONTAMINANTS INCREASE PERFORMANCE OF WASH LINE.



WET GRINDER: UNITS WITH HIGH FLEXIBILITY AND PERFORMANCES FOR EVERY TYPE OF PLASTICS. SPECIAL DESIGN WITH INTERCHANGEABLE WEARING PARTS.



Wide range of solutions:
from individual modules
to turnkey projects...

MODULES

HOT WASH FOR FLAKES:
THE SYSTEM PROVIDES INTENSIVE SURFACE CLEANING BY COMBINATION OF TEMPERATURE, TIME, FRICTION AND CHEMICALS. SOLUTION OFFERED FOR BOTH RIGID AND FILM LINES.

SEPARATION:
ALLOWS TO SEPARATE MATERIALS WITH DIFFERENT DENSITY. SPECIAL MODULES WITH MODIFIED DENSITY SEPARATION CAN BE OFFERED.

MECHANICAL DRYING:
IMPROVES DRYING OF THIN MATERIAL WITH OPTIMIZED ENERGY USE.

FINES SEPARATION:
SEPARATES FINES AND LIGHT FRACTION IN RECYCLING PROCESS.

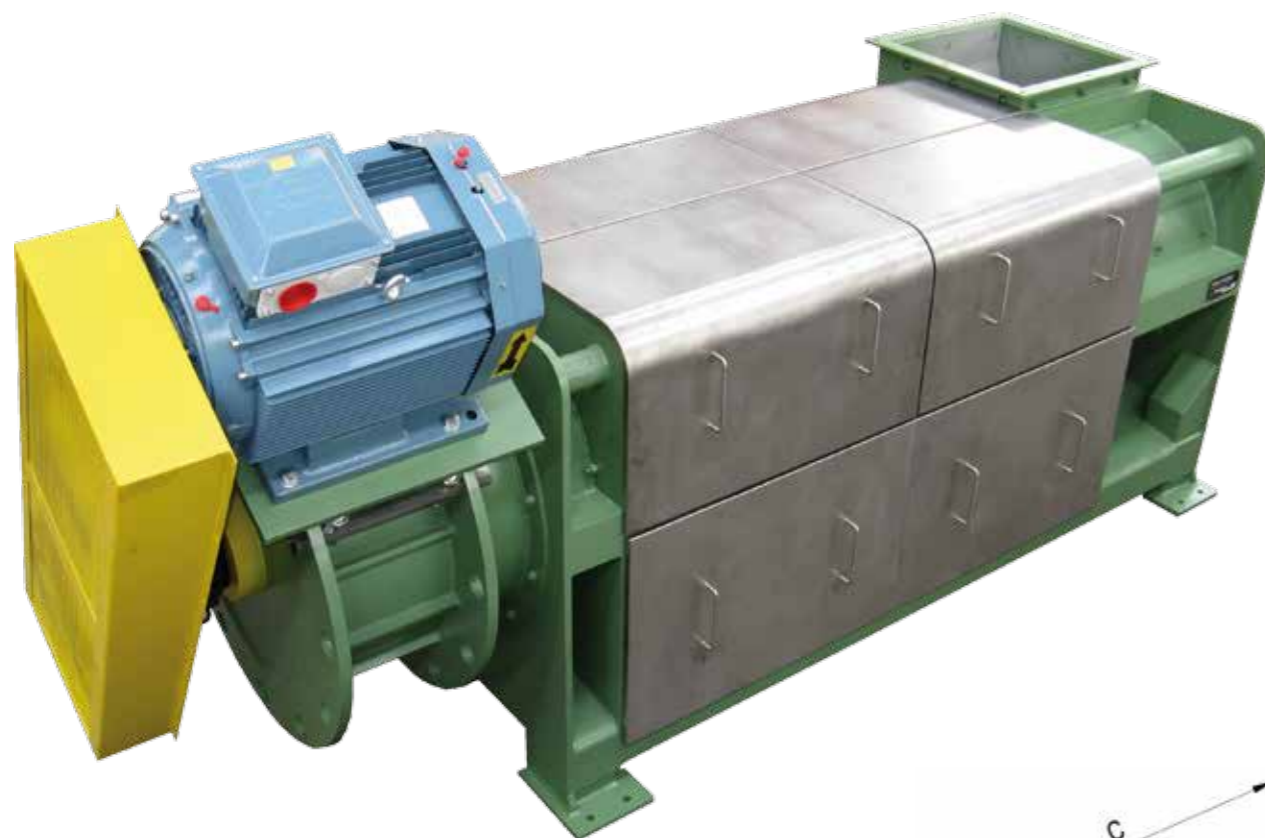
LABELS SEPARATION:
USED TO SEPARATE SLEEVE LABELS IN PET BOTTLES RECYCLING. TO REMOVE LABELS AND CONTAMINATION IN RIGID AND MIXED BOTTLES LINES.



DELABELER

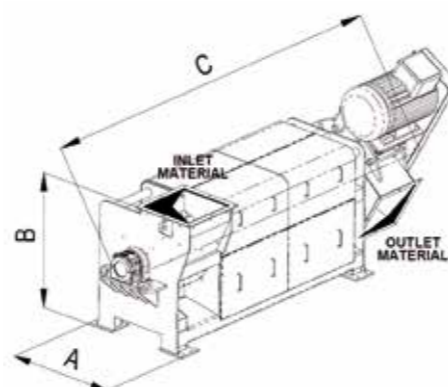
STANDARD CHARACTERISTICS

- High performance in separation of sleeve labels on PET bottles
- Removal of glued labels
- Strong surface decontamination
- Very low loss of bottle necks
- High flexibility (the machine can be easily integrated in any existing recycling lines assuring a wide range of production capacities)
- Low energy consumption
- Minimization of wear
- Easy maintenance operations and low maintenance costs
- Very useful not only as separation of sleeve labels but also as a dry pretreatment of mixed bottles or rigid packaging (associated with an aerodynamic separator the **Sorema** system is in position to obtain an excellent and more efficient separation of the light from the bulky materials and contaminants)

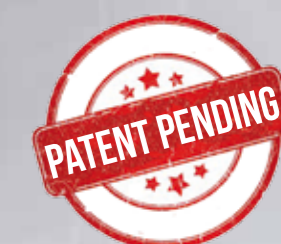


MODELS AVAILABLE

MODELS	DIMENSIONS			CAPACITY KG/H
	A	B	C	
DL4/20	800 mm.	1200 mm.	2800 mm.	500÷1000
DL6/30	1240 mm.	1480 mm.	4100 mm.	2000÷4000 KG/H
DL7/40	1490 mm.	1770 mm.	4900 mm.	5000÷7000 KG/H



THE SOREMA SLEEVE LABELS REMOVING SYSTEM





VIA PER CAVOLTO, 17
22040 ANZANO DEL PARCO (CO) • ITALY
PH. +39 031 63491250
FAX +39 031 63491217



sales@sorema.it • www.sorema.it
sales@previero.it • www.previero.it



Rev.1_10.2016